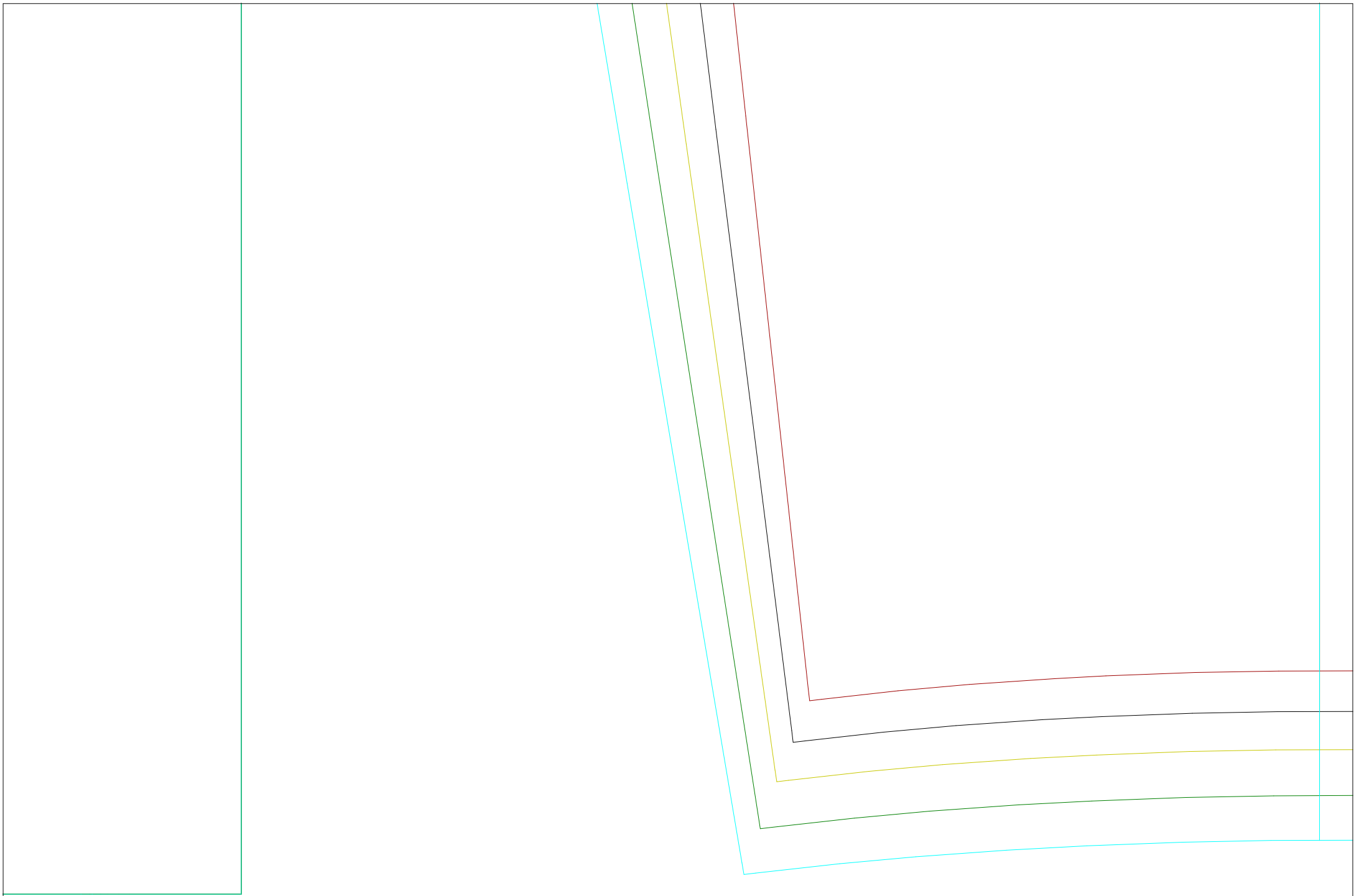
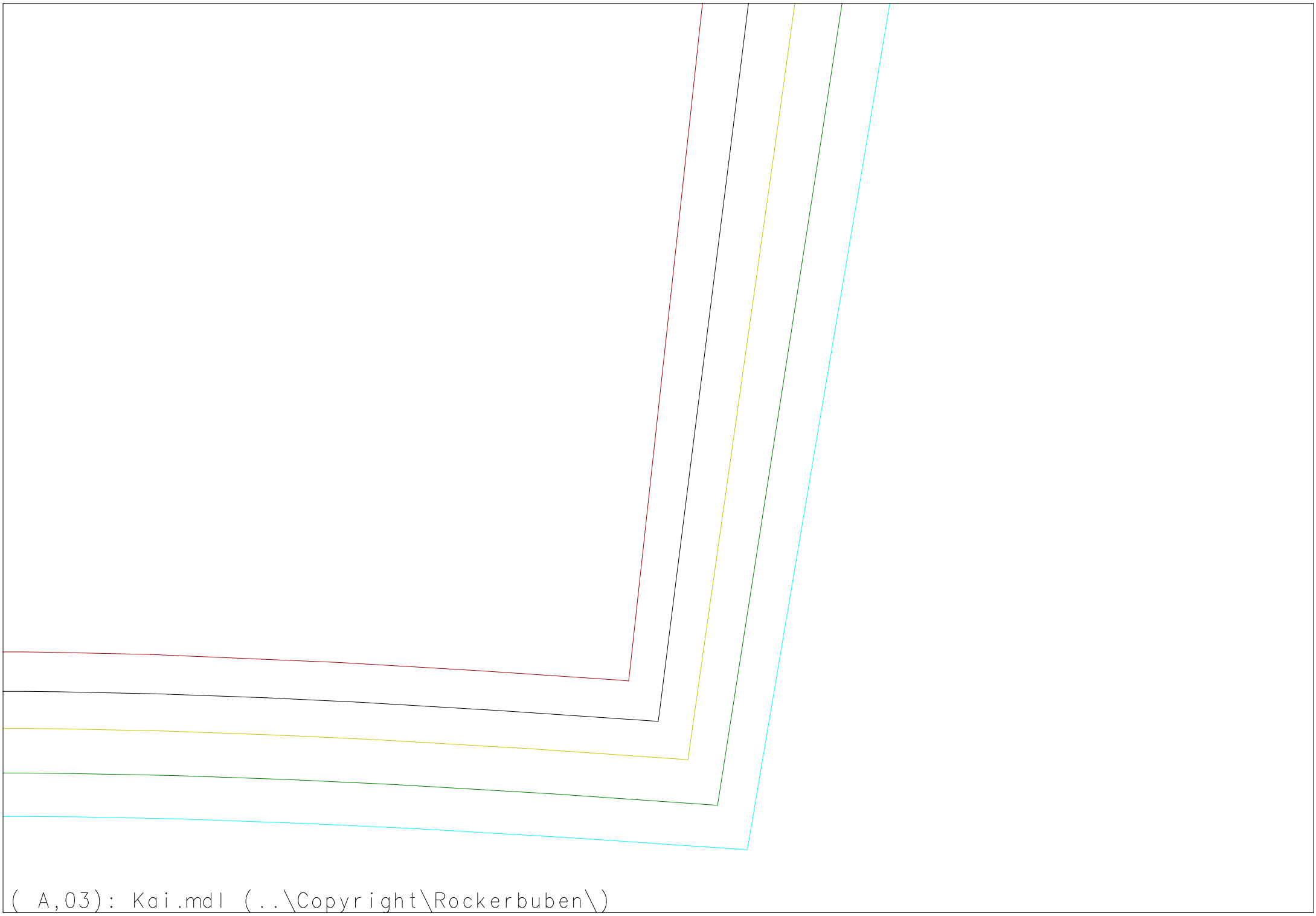


RT 1xOS/Bru
Kai





(A,03): Kai.mdl (...\\Copyright\\Rockerbuben\\)

Tasche

Tasche

Tasche



HAKA_M



HAKA_S

VT 1xOS/Bru
Kai
Rockerbuben

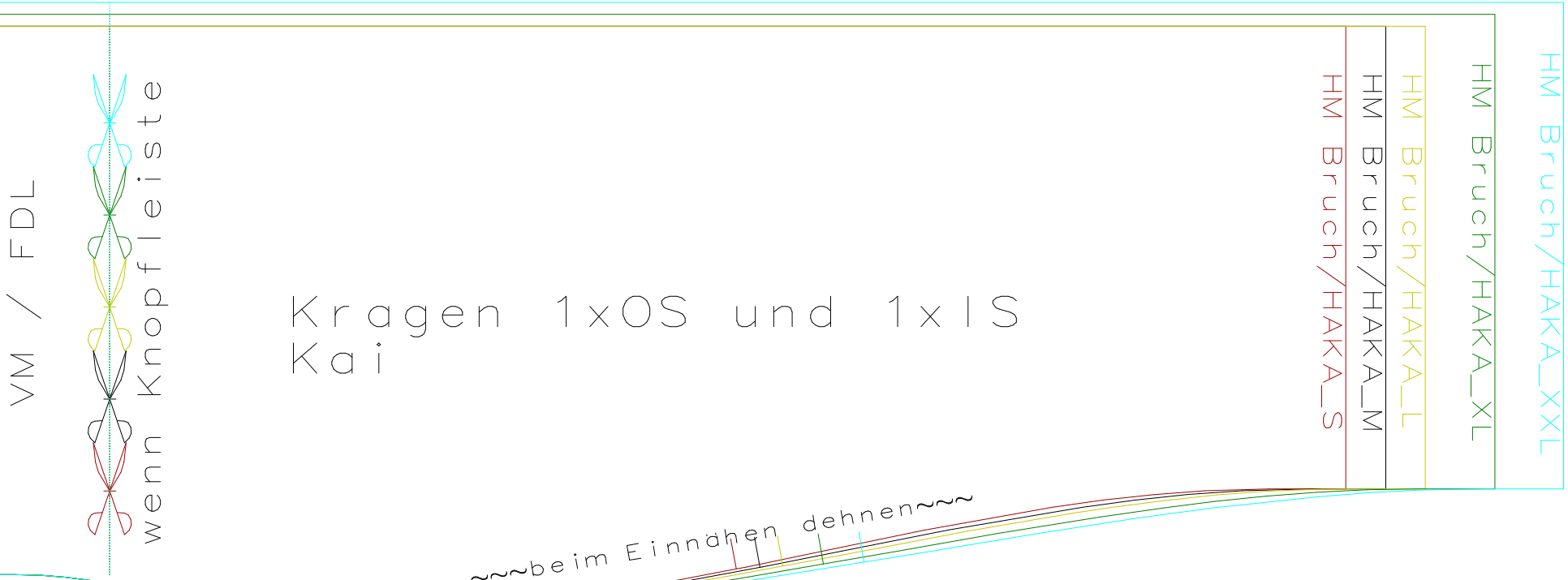
Tasche

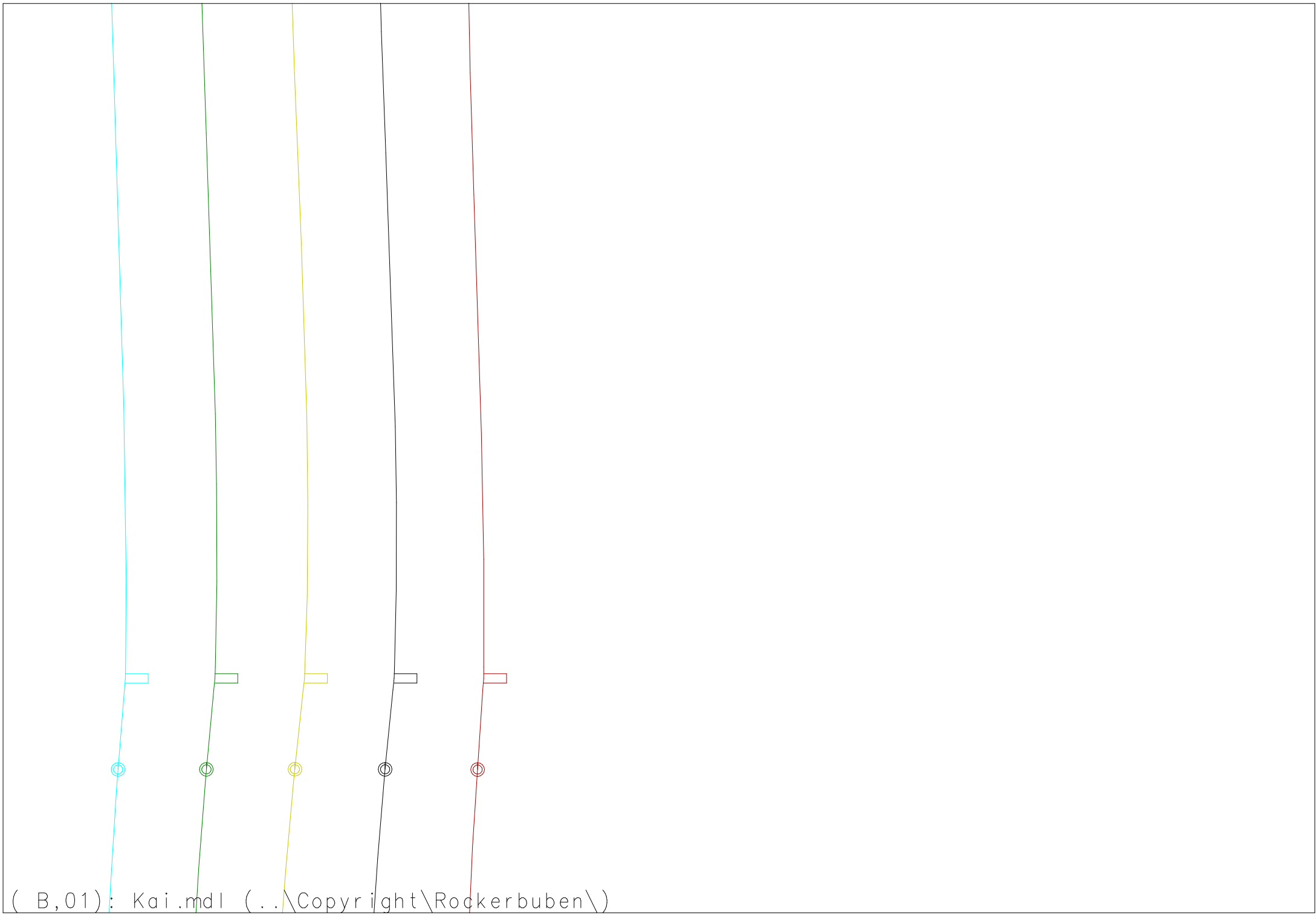
HAKA_XXL

Tasche

HAKA_XL

HAKA_L



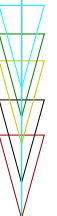


(B,01): Kai.mdl (...\\Copyright\\Rockerbuben\\)

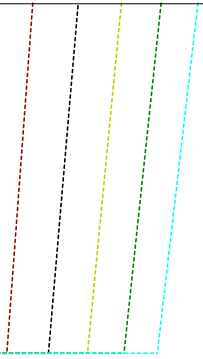
HM Bruch / Fadenlauf

Abtrennung
wenn gew

Ärme l 2x0S
Kai



ng Arm
ünscht



HAKA_S

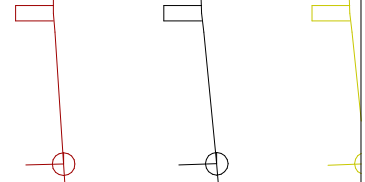
HAKA_M

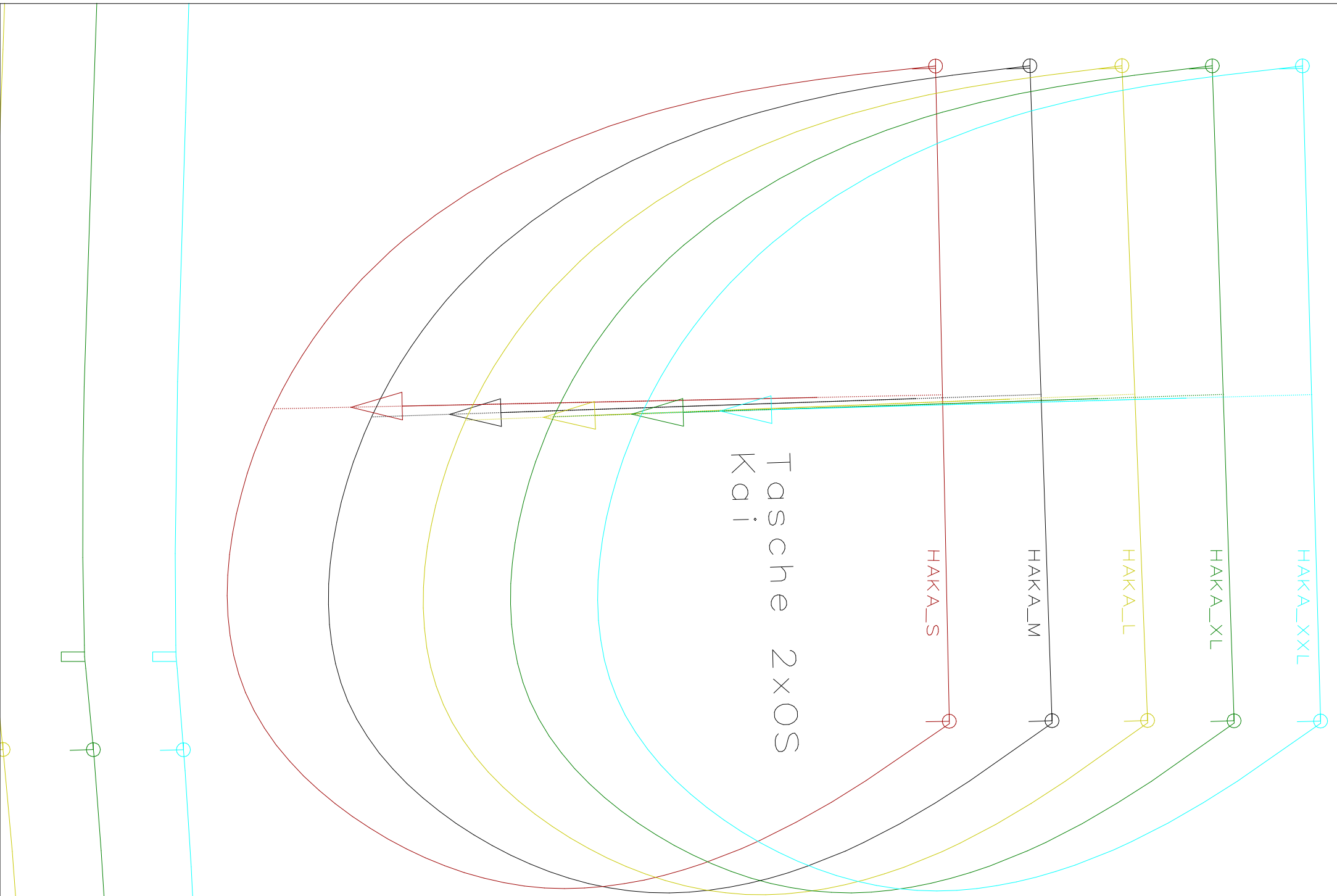
HAKA_L

HAKA_XL

HAKA_XXL

VM Bruch / Fadenlauf





Tasche 2x05
Kai

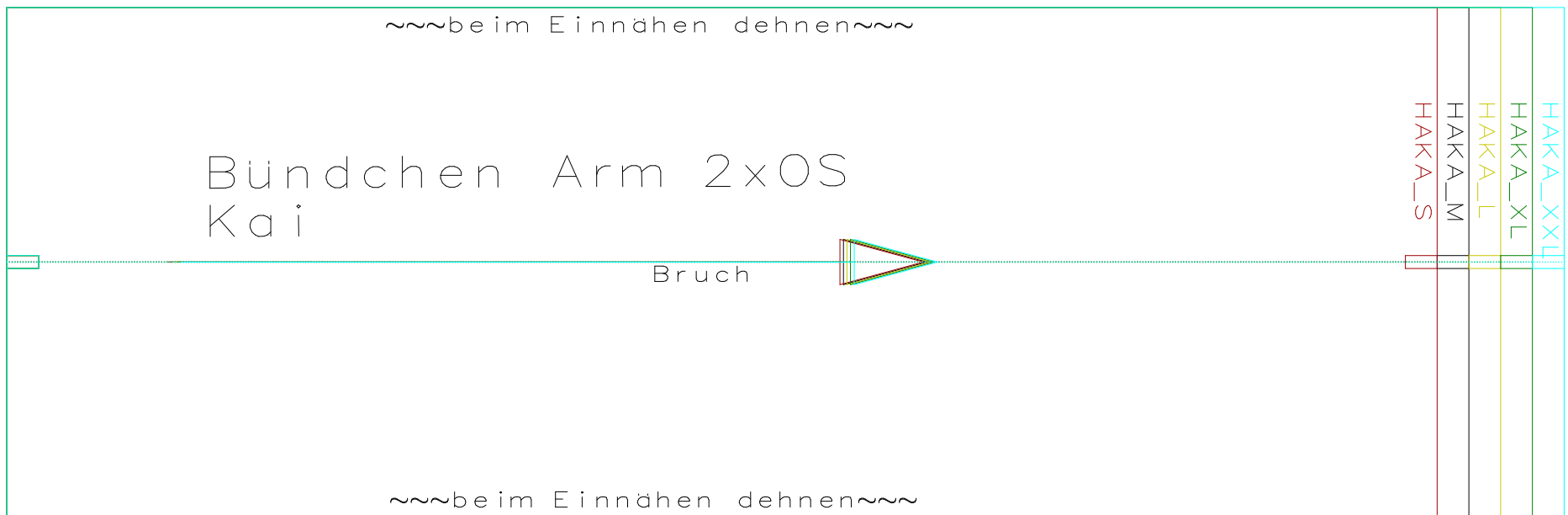
HAKA_S

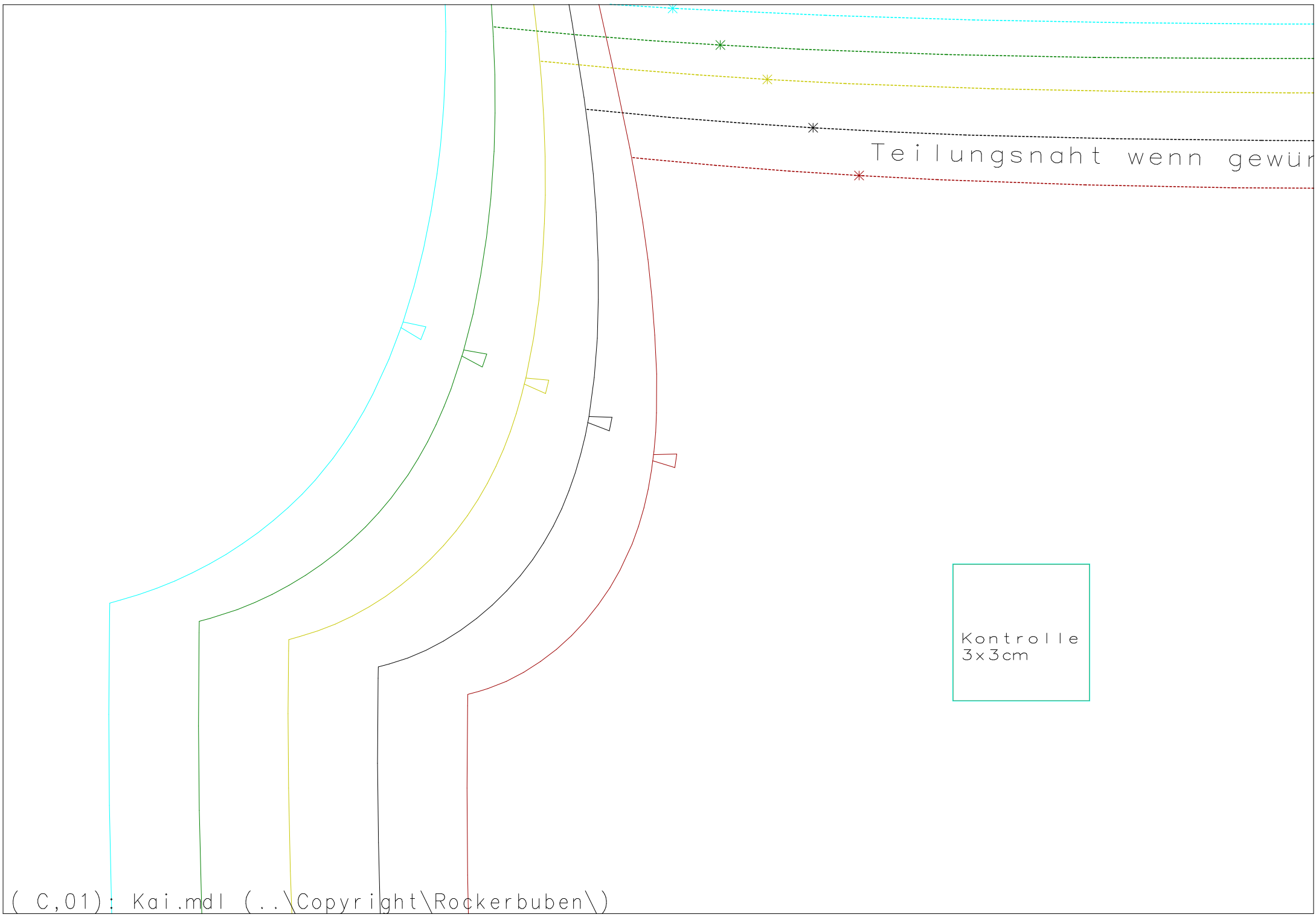
HAKA_M

HAKA_L

HAKA_XL

HAKA_XXL

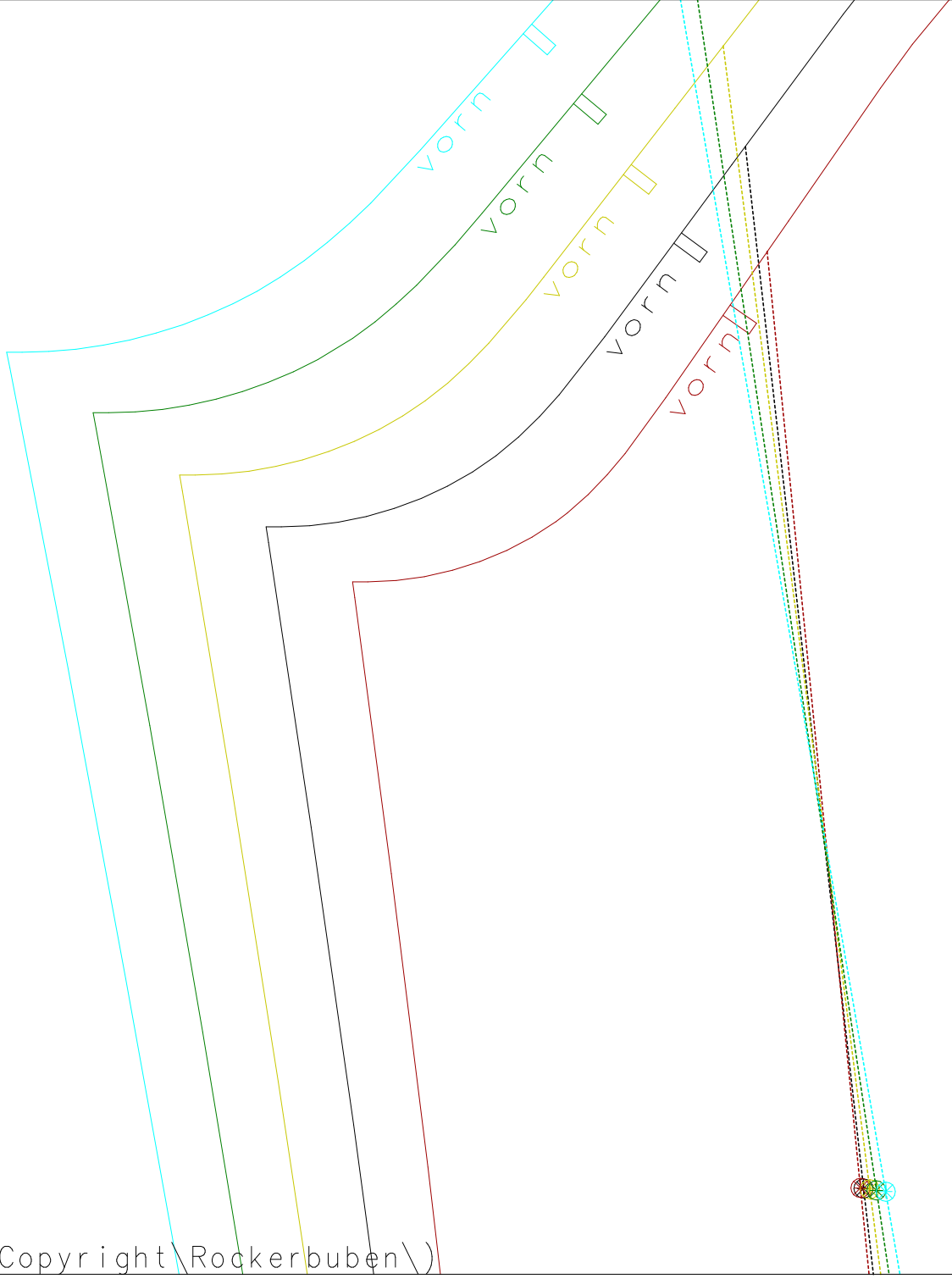


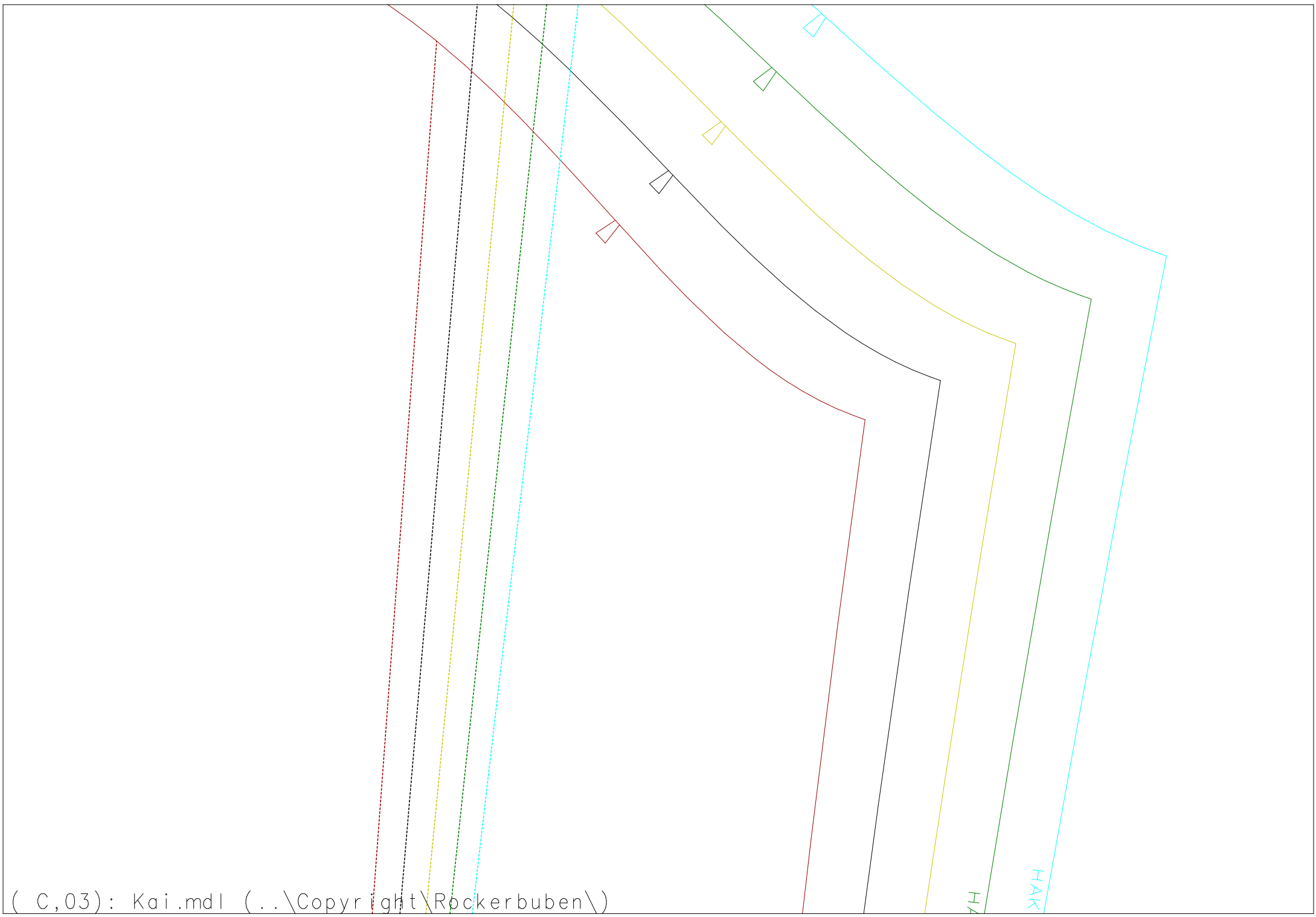


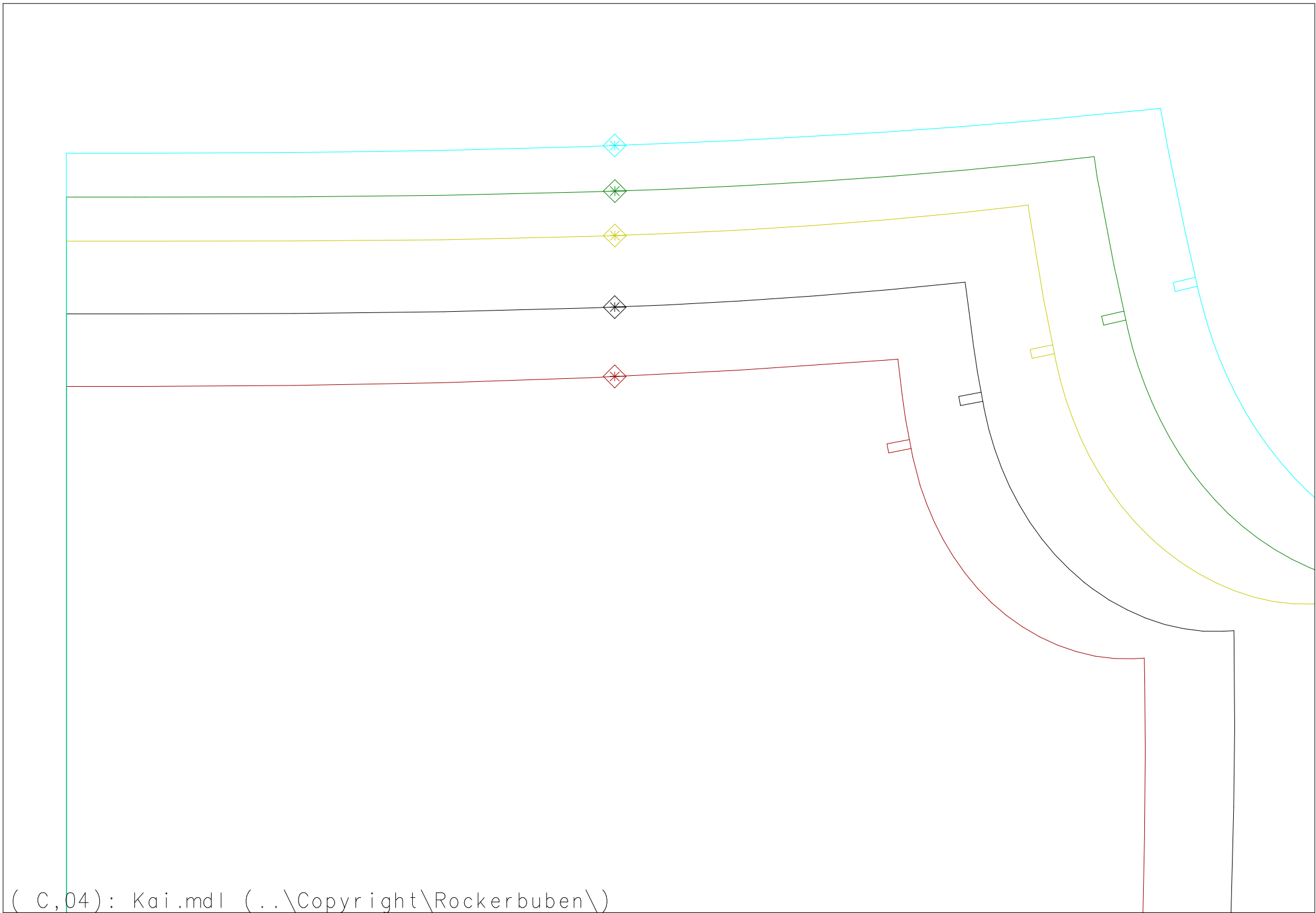
Teilungsnahrt wenn gewür

Kontrolle
3x3cm

nscht

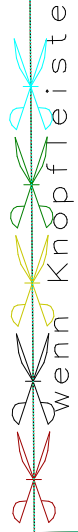






HAKA_XXL									
HAKA_XL									
HAKA_L									
HAKA_M									
HAKA_S	Knopfleiste 2xOS/E Kai	Bruch	VM/ Fadenlauf						

VM/ Fadenlauf



oVT 2xOS
Kai

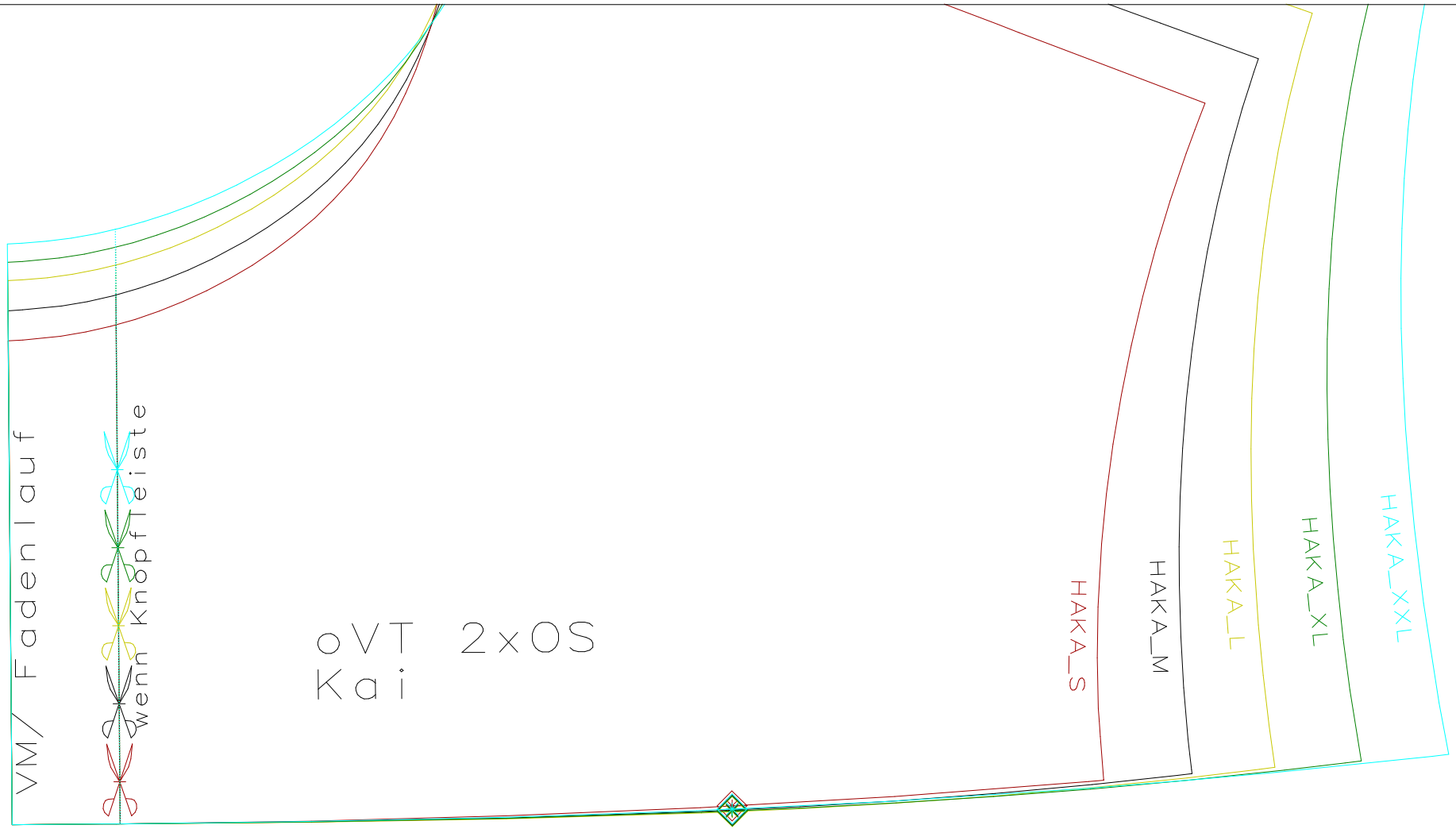
HAKA_S

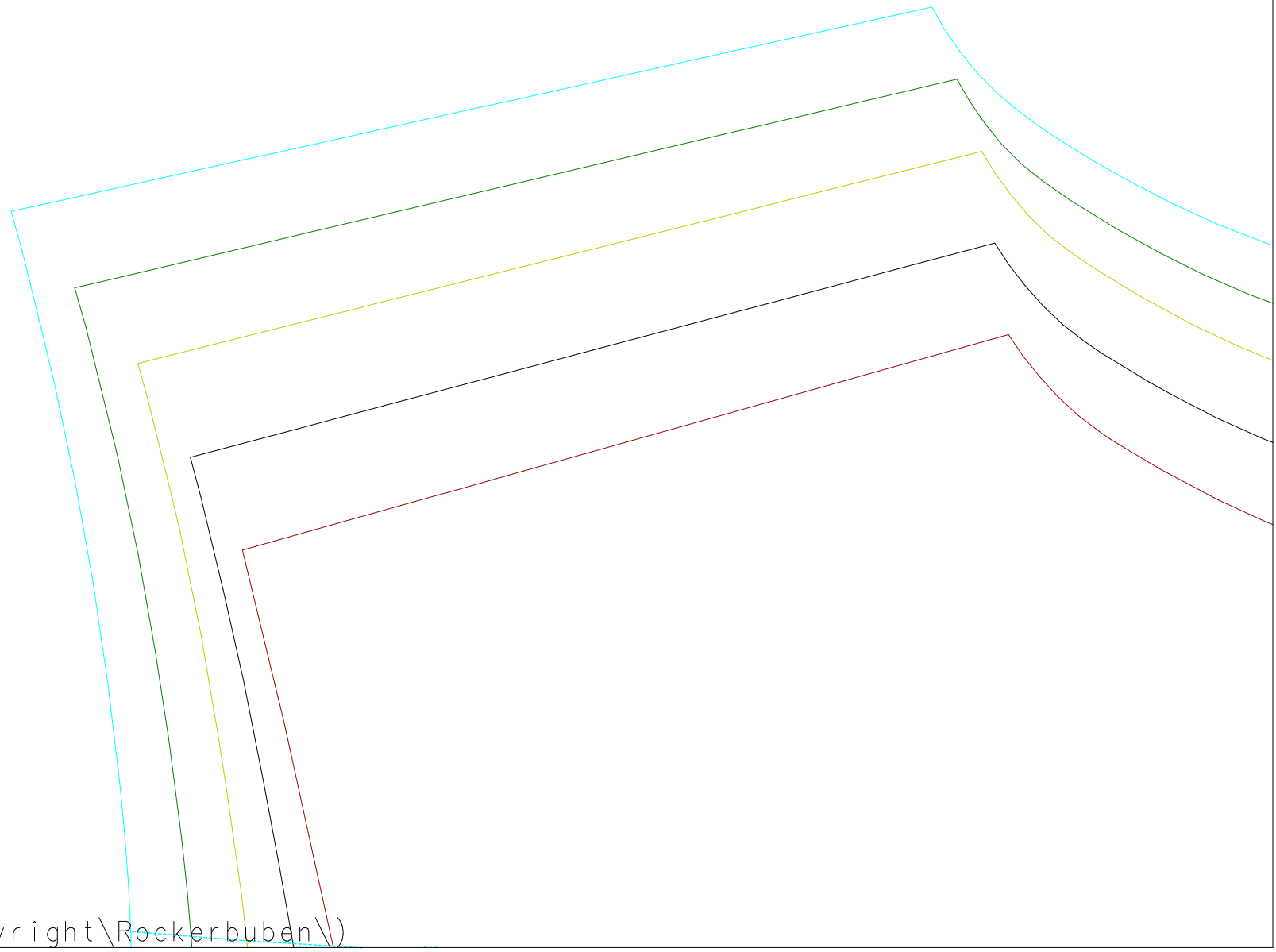
HAKA_M

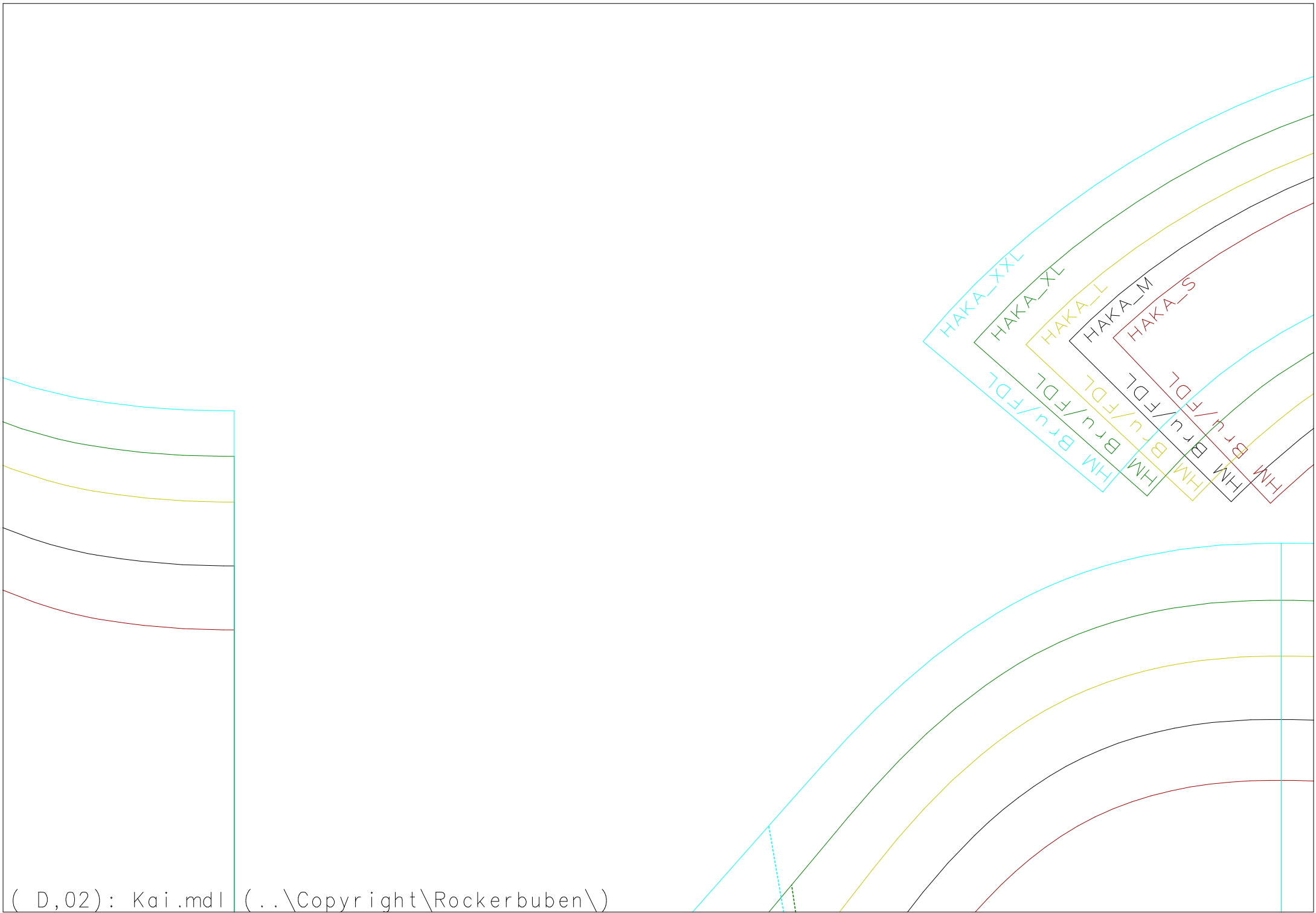
HAKA_L

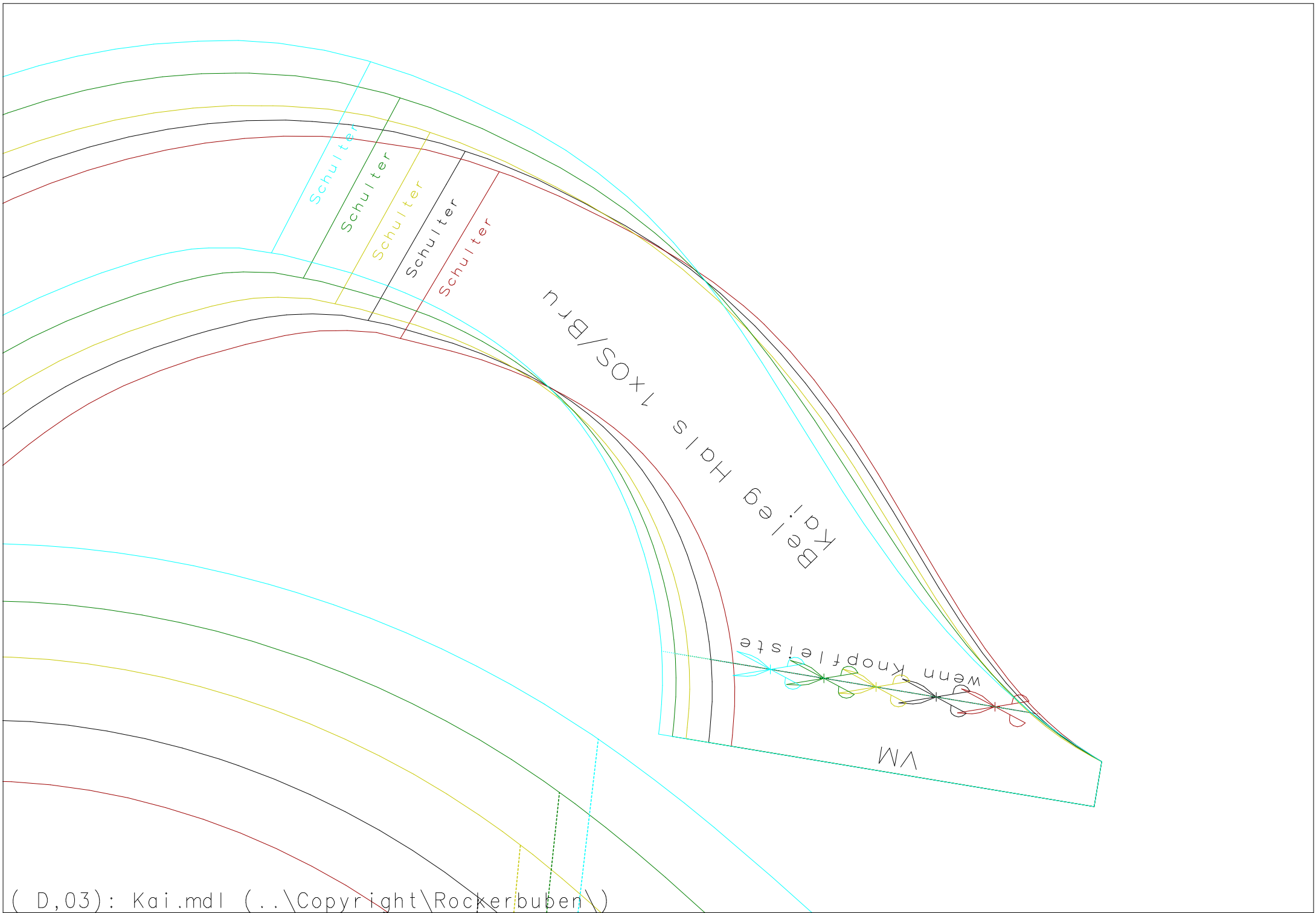
HAKA_XL

HAKA_XXL









~~~beim Einnähen dehnen~~~

Bruch

Bündchen Saum 2x0S  
Kai

VM

Bruch

Seitennaht

~~~beim Einnähen dehnen~~~

